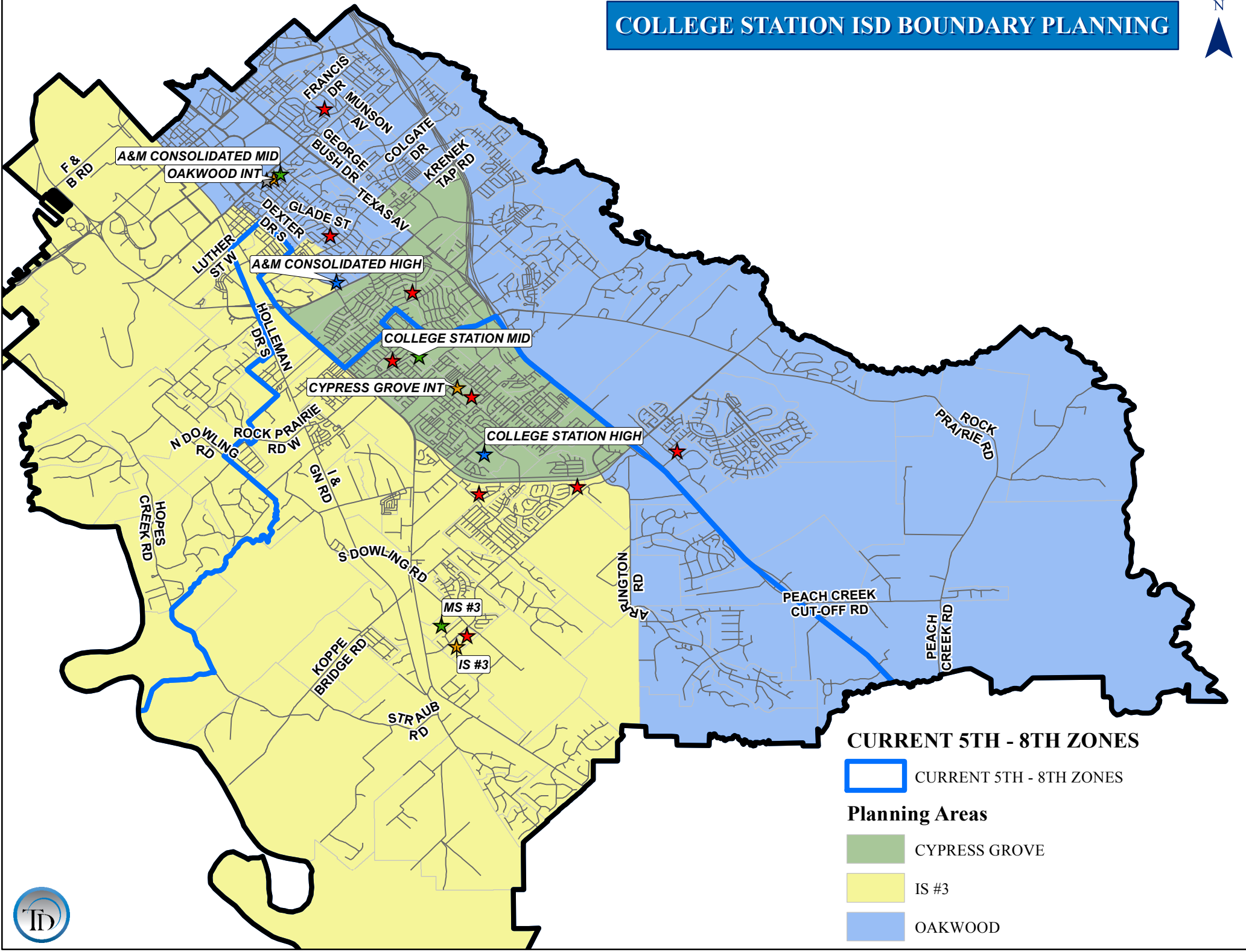


Nantucket and Indian Lakes to
OW/AMCMS then to **CSHS**


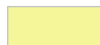

COLLEGE STATION ISD BOUNDARY PLANNING



CURRENT 5TH - 8TH ZONES

 CURRENT 5TH - 8TH ZONES

Planning Areas

-  CYPRESS GROVE
-  IS #3
-  OAKWOOD



COLLEGE STATION ISD

Intermediate School School Forecast Report/Grade Report

SCHOOL	5	6	TOTAL	CAPACITY	UTILIZATION	ED	%ED
CYPRESS GROVE	372	369	741			260	35.1%
IS #3	278	244	522			210	40.2%
OAKWOOD	331	333	664			224	33.7%
TOTAL	981	946	1,927			694	36.0%

SCHOOL	2015/16	2016/17	2017/18	2018/19	2019/20	2020/21	2021/22	2022/23	2023/24	2024/25	2025/26
CYPRESS GROVE	741	755	786	853	868	859	855	870	875	882	870
IS #3	522	560	615	683	706	718	724	761	784	814	816
OAKWOOD	664	665	713	739	772	756	754	759	774	788	795
TOTAL	1,927	1,980	2,114	2,275	2,346	2,333	2,333	2,390	2,433	2,484	2,481

COLLEGE STATION ISD

Middle School School Forecast Report/Grade Report

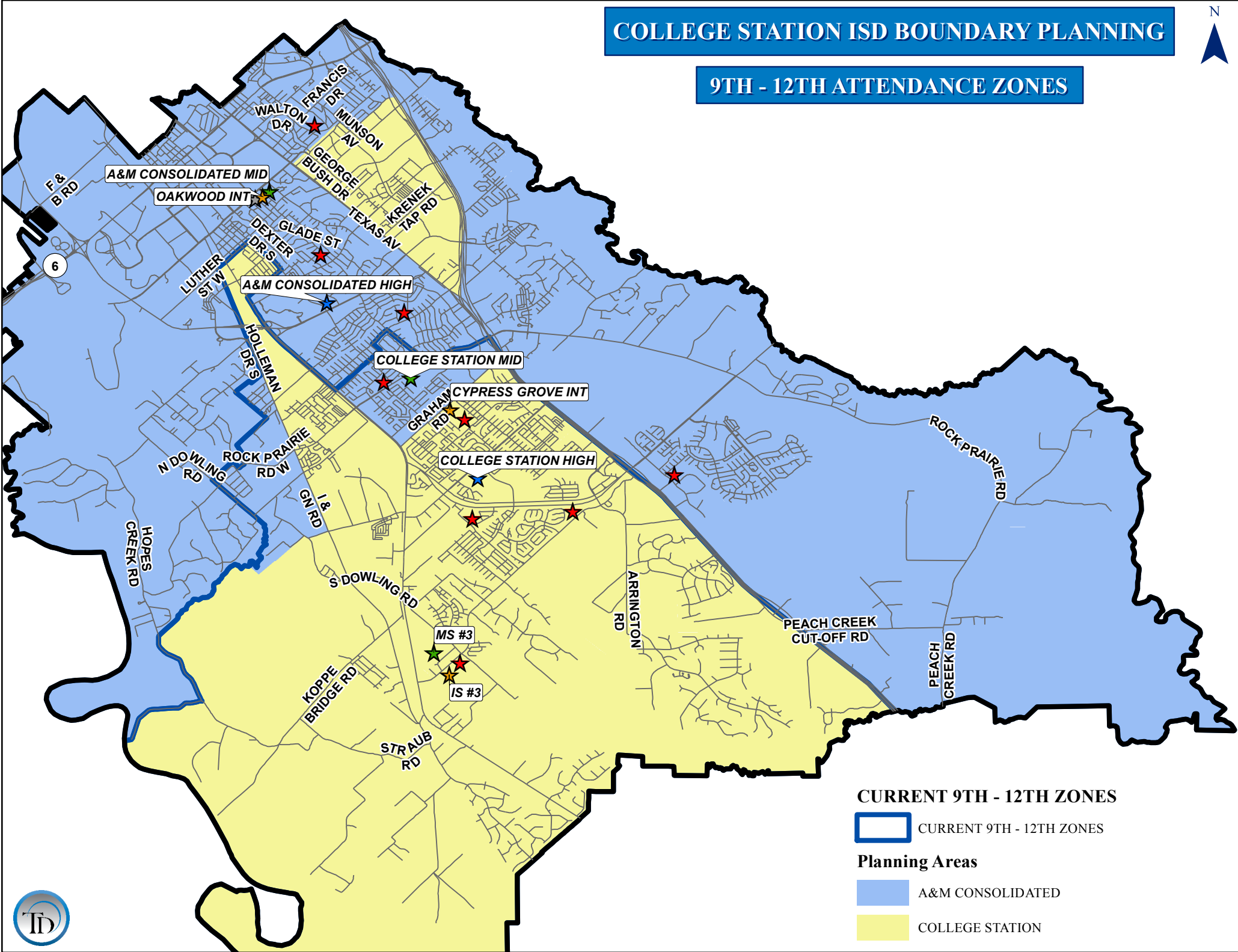
SCHOOL	6	7	8	6TH-7TH	7TH-8TH	CAPACITY	UTILIZATION	ED	%ED
A&M CONSOLIDATED	332	329	304	661	633			206	32.5%
COLLEGE STATION	370	365	345	735	710			233	32.8%
MS #3	244	247	230	491	477			178	37.3%
TOTAL	946	941	879	1,887	1,820			617	33.9%

SCHOOL	2015/16	2016/17	2017/18	2018/19	2019/20	2020/21	2021/22	2022/23	2023/24	2024/25	2025/26
A&M CONSOLIDATED	633	631	672	703	756	799	852	824	816	830	832
COLLEGE STATION	710	712	728	769	800	862	883	873	868	882	890
MS #3	477	534	606	640	733	818	840	844	863	905	924
TOTAL	1,820	1,877	2,006	2,112	2,289	2,479	2,575	2,541	2,547	2,617	2,646

COLLEGE STATION ISD BOUNDARY PLANNING



9TH - 12TH ATTENDANCE ZONES



CURRENT 9TH - 12TH ZONES

 CURRENT 9TH - 12TH ZONES

Planning Areas

 A&M CONSOLIDATED

 COLLEGE STATION



COLLEGE STATION ISD

Recommended High School Grade Report

SCHOOL	8	9	10	11	12	8TH-11TH	9TH-12TH	CAPACITY	UTILIZATION	ED	%ED
A&M CONSOLIDATED	453	505	439	463	430	1,860	1,837	2,400	76.5%	543	29.6%
COLLEGE STATION	426	485	504	407	351	1,822	1,747	1,800	97.1%	507	29.0%
TOTAL	879	990	943	870	781	3,682	3,584	4,200	85.3%	1,050	29.3%

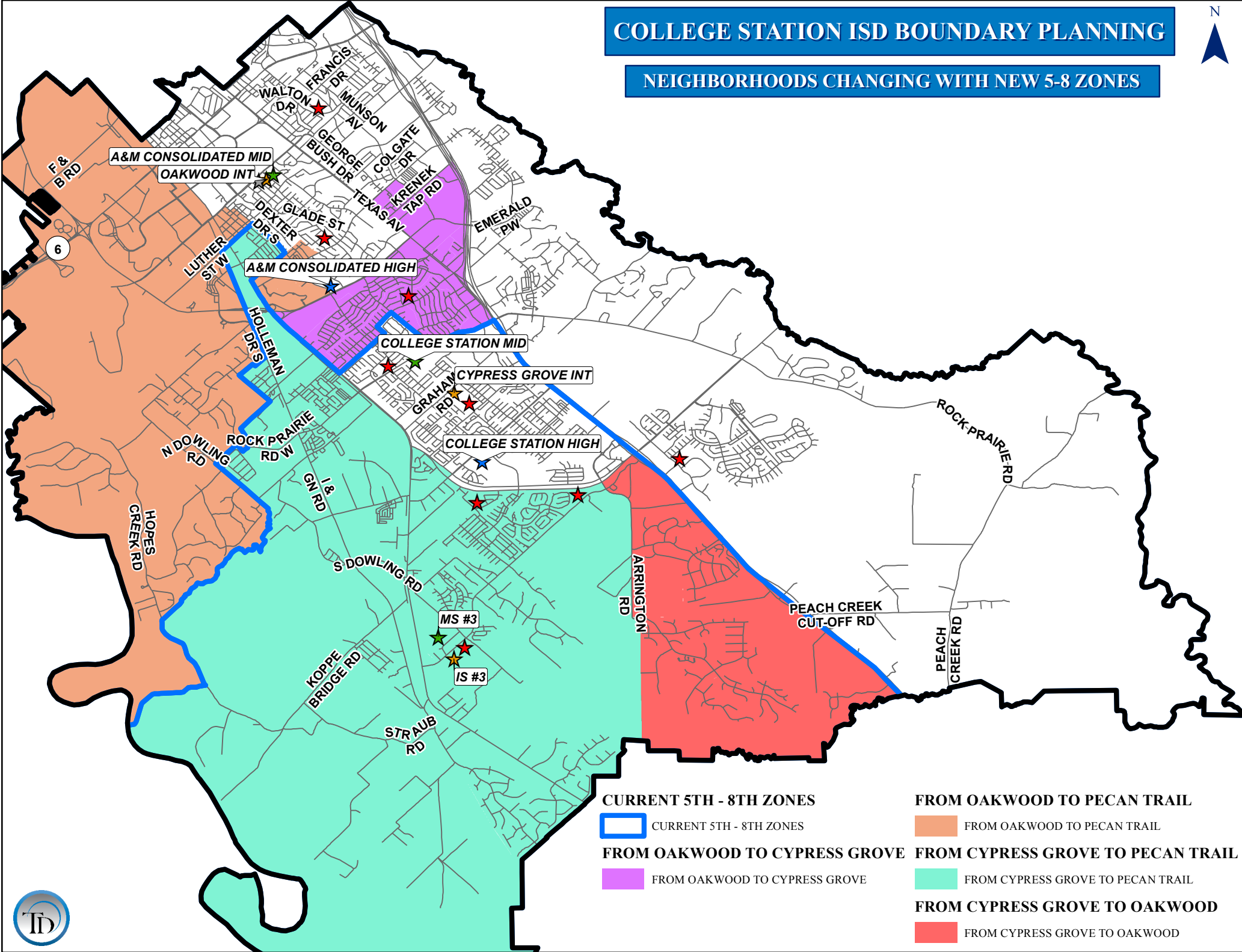
COLLEGE STATION ISD

Recommended High School Forecast Report

SCHOOL	2015/16	2016/17	2017/18	2018/19	2019/20	2020/21	2021/22	2022/23	2023/24	2024/25	2025/26
A&M CONSOLIDATED	1,837	1,905	1,965	2,026	2,110	2,216	2,335	2,487	2,621	2,739	2,791
COLLEGE STATION	1,747	1,774	1,873	1,982	2,141	2,289	2,477	2,652	2,804	2,934	3,029
TOTAL	3,584	3,679	3,838	4,008	4,251	4,505	4,812	5,139	5,425	5,673	5,820

COLLEGE STATION ISD BOUNDARY PLANNING


NEIGHBORHOODS CHANGING WITH NEW 5-8 ZONES



CURRENT 5TH - 8TH ZONES

 CURRENT 5TH - 8TH ZONES


FROM OAKWOOD TO CYPRESS GROVE

 FROM OAKWOOD TO CYPRESS GROVE


FROM OAKWOOD TO PECAN TRAIL

 FROM OAKWOOD TO PECAN TRAIL

FROM CYPRESS GROVE TO PECAN TRAIL

 FROM CYPRESS GROVE TO PECAN TRAIL

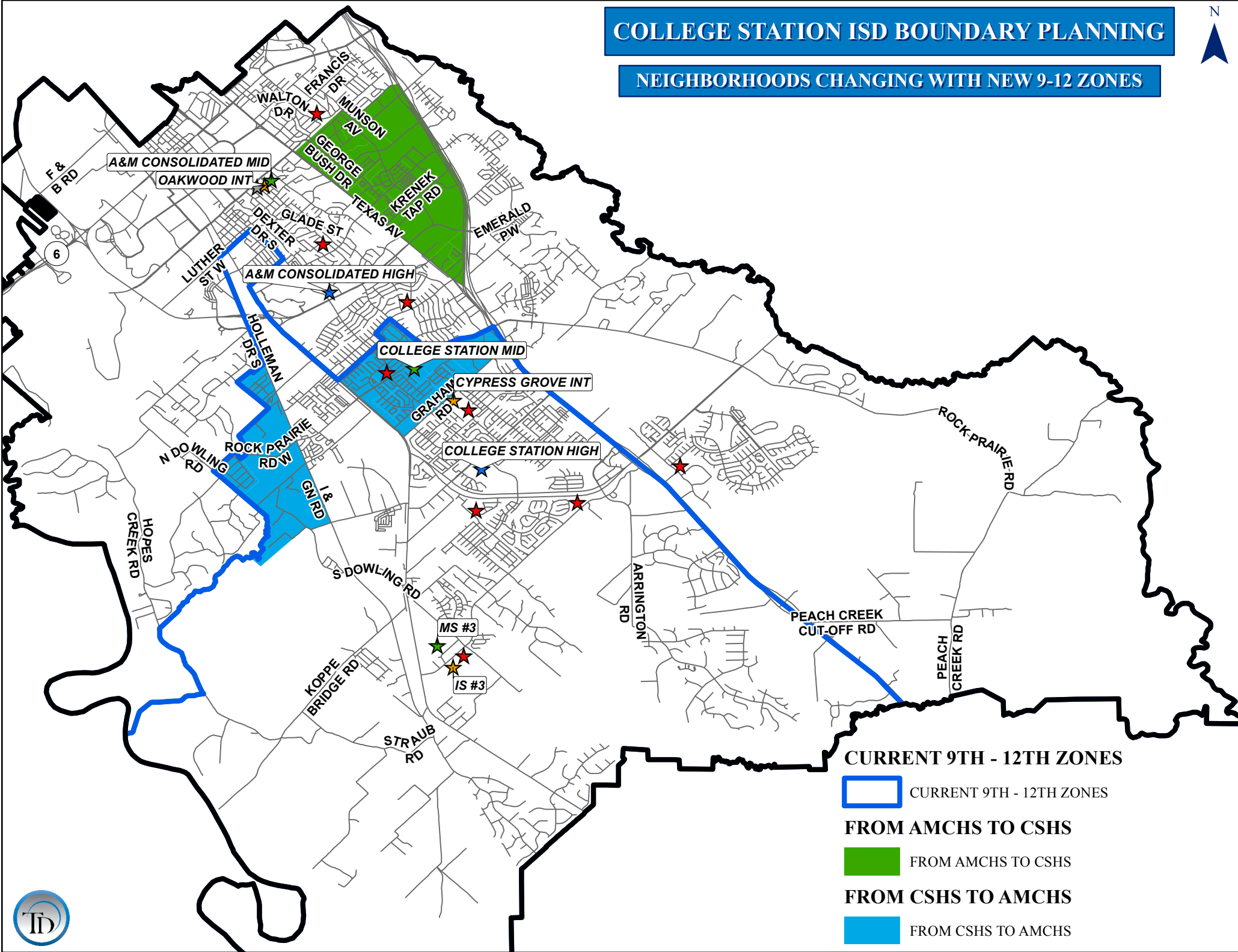
FROM CYPRESS GROVE TO OAKWOOD

 FROM CYPRESS GROVE TO OAKWOOD



COLLEGE STATION ISD BOUNDARY PLANNING

NEIGHBORHOODS CHANGING WITH NEW 9-12 ZONES



CURRENT 9TH - 12TH ZONES

 CURRENT 9TH - 12TH ZONES

FROM AMCHS TO CSHS

 FROM AMCHS TO CSHS

FROM CSHS TO AMCHS

 FROM CSHS TO AMCHS



MIDDLE SCHOOL FEEDER REPORT

MIDDLE SCHOOL TO HIGH SCHOOL ZONE	7th GRADE	8th GRADE	7 - 8 TOTAL	7th GRADE %	8th GRADE %	7-8 GRADE %
A&M CONSOLIDATED MIDDLE	330	305	635			
A&M CONSOLIDATED HIGH	251	229	480	76%	75%	76%
COLLEGE STATION HIGH	79	76	155	24%	25%	24%
COLLEGE STATION MIDDLE	364	344	708			
A&M CONSOLIDATED HIGH	168	170	338	46%	49%	48%
COLLEGE STATION HIGH	196	174	370	54%	51%	52%
MS #3	247	230	477			
A&M CONSOLIDATED HIGH	43	50	93	17%	22%	19%
COLLEGE STATION HIGH	204	180	384	83%	78%	81%